

# THE KEMPENFELT - LOT 26

2,998 S.F. | 4 Bedrooms | 3.5 Baths



**UPGRADED BUILDER HOME. MOVE-IN READY!**

NEW HST  
REBATE \$ **\$1,343,900**  
WAS \$1,449,900

## Family living meets elevated design.

- \$150,000\* in upgrades included
- Premium Lookout Lot backing onto nature preserve on quiet cul de sac
- Open-concept kitchen, dining, and great room designed for everyday living and entertaining
- Upgraded kitchen design with Kitchen Aid appliance package, including 36" dual gas stove and 42" built-in fridge
- Upgraded interior and exterior pot lighting package
- Upgraded laundry room cabinets
- Upgraded luxury vinyl floors throughout main and 2<sup>nd</sup> floor
- Primary ensuite with glass shower and freestanding tub
- Primary suite on main floor with additional 3 bedrooms and loft on the 2<sup>nd</sup> floor, creating a functional and family-friendly layout
- Covered rear deck for extended outdoor living, *and much more*

**OWN A BRAND NEW HOME - ASK FOR A TOUR TODAY!**

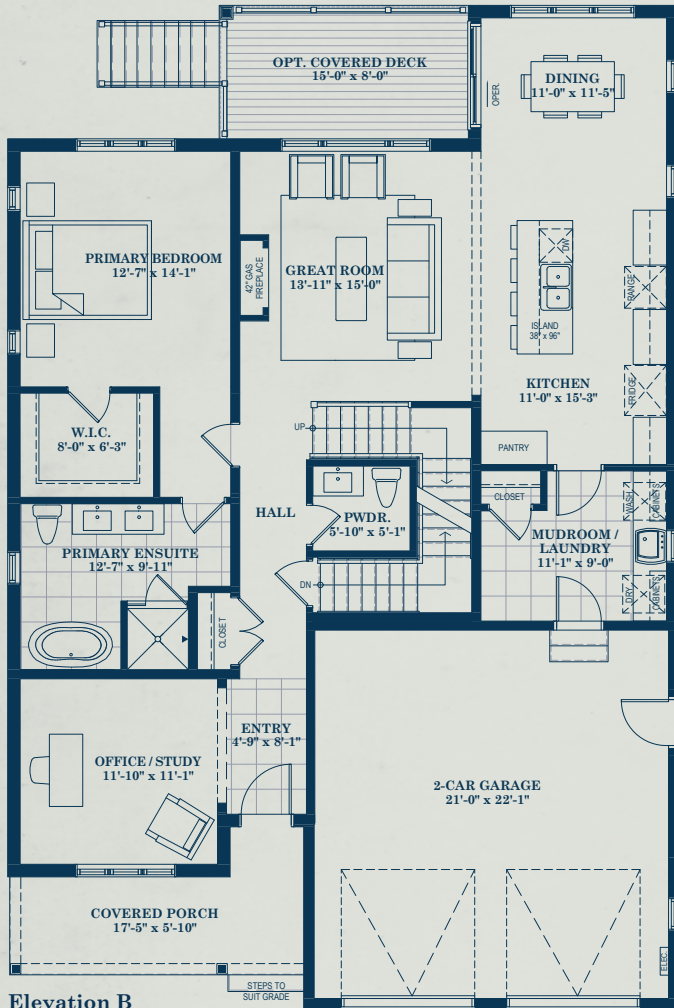
*Kempenfelt Bay, a segment of Lake Simcoe along the Oro-Medonte shores, was a vital link for early settlers, connecting the historic Nine Mile portage to the Nottawasaga River and Georgian Bay.*



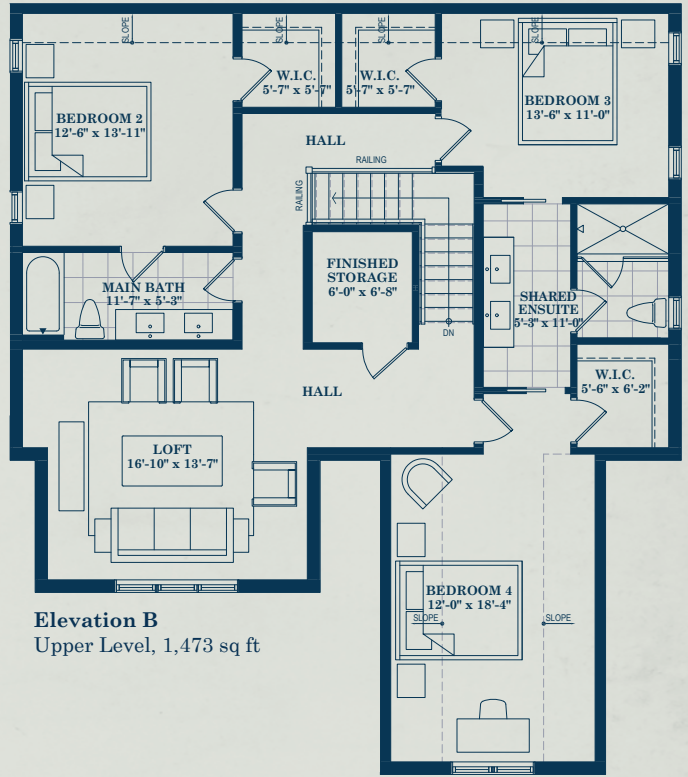
**CRAIGHURST**  
CROSSING

# THE KEMPENFELT - LOT 26

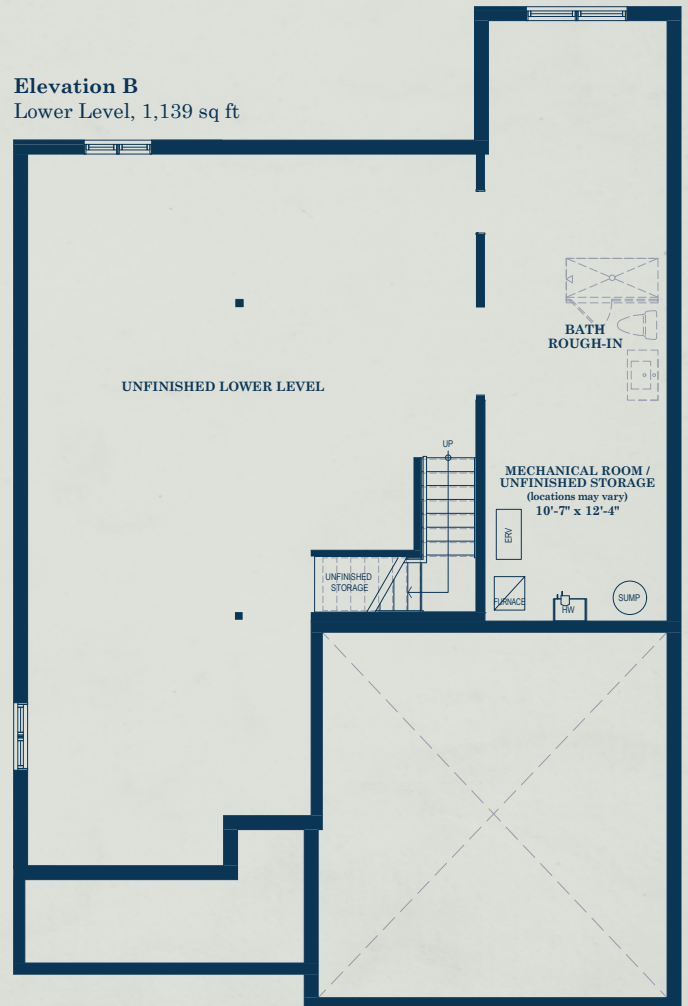
2,998 S.F. | 4 Bedrooms | 3.5 Baths



**Elevation B**  
Main Level, 1,525 sq ft



**Elevation B**  
Upper Level, 1,473 sq ft



**Elevation B**  
Lower Level, 1,139 sq ft



\* Upgrade value is approximate and based on current builder pricing. Pricing, promotions and information correct at sent time and subject to change without notice. Renderings are artist's concept. Brokers Protected. E. & O. E.